

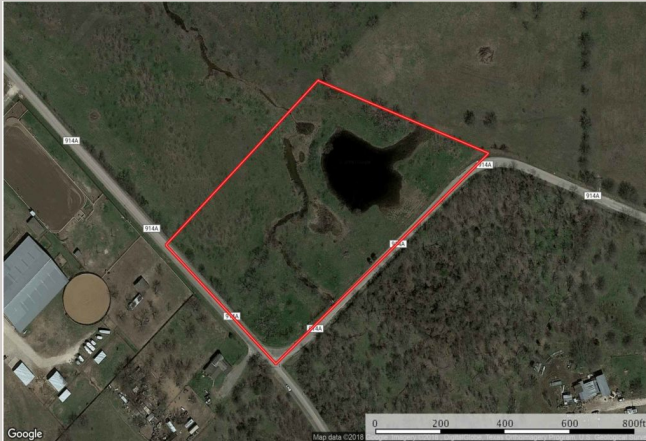


CLAYTON - WAGGONER
PROPERTIES

325 N. St. Paul, Suite 3350
Dallas, TX 75201
claytonwaggoner.com
[\(844\) 725-6247](tel:8447256247)

Burleson Homesite

\$199,900



6.00 Acres
Johnson County
County Road 914A Burleson, Texas

Contact the Agent

Tim McGinty
469-441-9052
tim@claytonwaggoner.com

PROPERTY HIGHLIGHTS

Located next to the new TCU Equestrian Facility, Diamond Creek Ranch. Great opportunity to build a home with acreage in the Joshua school district. Six acres with additional acreage available! Water and electric are available. Located within minutes of Chisholm Trail Parkway.

This property is exclusively listed by Tim McGinty (469) 441-9052 of Clayton-Waggoner Properties, LLC. Any and all information contained herein has been obtained from sources deemed reliable by Listing Broker. Listing Broker does not warranty or guaranty the accuracy of the information.

Buyers broker/agent must be identified on first contact and must accompany prospective buyer on first showing to be allowed full fee participation. If this condition is not met, the fee participation will be at the sole discretion of the Listing Broker. Prospects may be required to provide proof of funds prior to scheduling a showing.