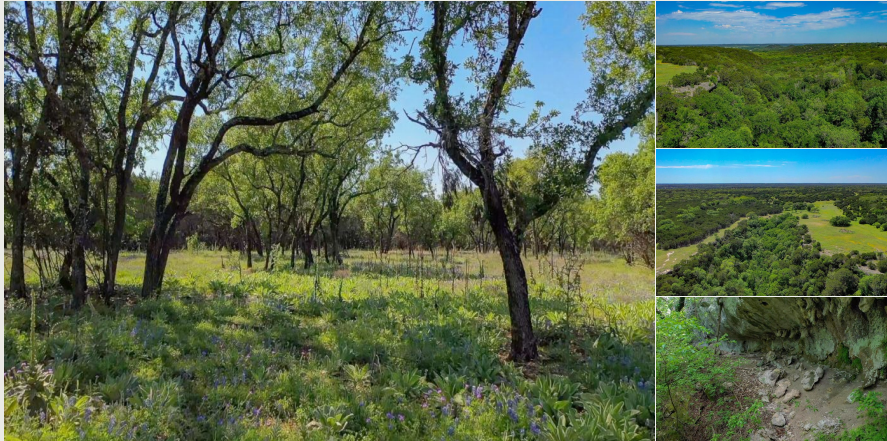


## V-Bar Canyon Ranch

**\$1,817,000**



460.00 Acres  
Bosque County  
County Road 1035 Meridian, Texas

### Contact the Agent

**Tim McGinty**  
469-441-9052  
[tim@claytonwaggoner.com](mailto:tim@claytonwaggoner.com)

### PROPERTY HIGHLIGHTS

Priced at \$4,150/acre! Part of the historic V-Bar Ranch. Large acreage, seclusion, and the varied terrain of central Bosque County make the 460-acre V-Bar Canyon Ranch a covetable recreational property in Meridian, TX. Heavily wooded with live oaks and many other types of hardwoods, the land includes elevations up to 1020' with over 200' of elevation change creating beautiful scenic views and multiple potential building sites. Current owner has made extensive investment in developing this property for its recreational potential including cedar clearing, road development, water development and boundary fencing for livestock.

Amongst the rock cliffs and canyons, this property includes open meadows with good soil that produce strong native grasses good for livestock or food plots. There are several canyons averaging depths of 70' with dense vegetation and rock ledges that create cave-like openings. Water development includes a .3-acre earthen stock tank that will support wildlife and livestock. And Dyes Branch creek is a seasonal creek that begins at the southern boundary and...

